

**BOTMC 2022 Schedule (rev 8/11/22) – <http://www.berkeleyoldtimemusic.org>**

<b>Wed Sept 21</b>			
<b>Welcome Party:</b> <ul style="list-style-type: none"> <li>Square dance: Mike Lewinski &amp; Corn Potato String Band</li> <li>Couple dancing (Cajun &amp; country): Ann Savoy &amp; Thompsonia</li> <li>Jamming in back room: Harry &amp; Cindy Liedstrand</li> </ul>	8pm	Ashkenaz	Tickets at door or part of 4 day pass Instrument check
<b>Thurs. Sept. 22</b>			
<b>Jamming:</b> for location, send email to <a href="mailto:BOTMCAfternoonJam@gmail.com">BOTMCAfternoonJam@gmail.com</a>	1pm-4pm		FREE
<b>Workshops:</b> <ul style="list-style-type: none"> <li>Fiddle – Earl White</li> <li>Banjo – Clinton Davis. Exploring open D tuning</li> </ul>	4:30pm-5:45pm	Freight & Salvage	\$25
<b>Hosted Jamming:</b> Jim & Amber Mueller	5pm on	Freight & Salvage	FREE
<b>Concert:</b> <ul style="list-style-type: none"> <li>Corn Potato String Band</li> <li>Piedmont Blüz</li> <li>New Vintage Revelers</li> </ul>	8pm (doors to concert hall open 7)	Freight & Salvage	\$28+fees adv \$32+fees door Discounts for age 21 & under & seniors
<b>Fri. Sept. 23</b>			
<b>Jamming:</b> for location, send email to <a href="mailto:BOTMCAfternoonJam@gmail.com">BOTMCAfternoonJam@gmail.com</a>	1pm-4pm		FREE
<b>Concert:</b> The Propagators	1pm-4pm	Berkeley Hort	FREE
<b>Workshops:</b> <ul style="list-style-type: none"> <li>Fiddle Rags – Lindsay McCaw</li> <li>Finger style Banjo – Aaron Jonah Lewis</li> </ul>	6pm-7:30pm	Freight & Salvage	\$25
<b>Hosted Jamming:</b> Mark Olson & Penny Critchlow	5pm on	Freight & Salvage	FREE
<b>Concert:</b> <ul style="list-style-type: none"> <li>Alice Gerrard with Tatiana Hargreaves &amp; Reed Stutz</li> <li>Earl White Stringband</li> <li>Skillet Licorice Allsorts Orchestra</li> </ul>	8pm (doors to concert hall open 7)	Freight & Salvage	\$28+fees adv \$32+fees door Discounts for age 21 & under & seniors
<b>Sat. Sept. 24</b>			
<b>Concert for kids and families - Piedmont Blüz</b>	10:15am-11am	Civic Center Park	FREE
<b>String Band Contest</b> Opening set by Manning Music Fiddlers Hosted Jamming: TBA	11am to 2:30pm	Civic Center Park	FREE
<b>Square Dance:</b> <ul style="list-style-type: none"> <li>Clogging lesson with Mark Schatz</li> <li>Earl White Stringband</li> <li>Tatiana Hargreaves</li> <li>Right To Parlay</li> <li>Callers Robin Fischer &amp; Evie Ladin</li> <li>Open jam in the back room, hosted by BOTMC performers</li> </ul>	8pm	Ashkenaz	\$23 advance; \$25 door Instrument check
<b>Sun. Sept. 25</b>			
<b>Music Workshops:</b> <ul style="list-style-type: none"> <li>Fiddle - Tatiana Hargreaves</li> <li>Guitar - Valerie Turner (Piedmont country blues)</li> </ul>	11am - 12:15pm	Freight & Salvage	\$25
<b>Workshop:</b> A Visit with Alice Gerrard	11am - 12pm	Freight & Salvage	FREE
<b>Music Workshops:</b> <ul style="list-style-type: none"> <li>Fiddle - Aaron Jonah Lewis</li> <li>Banjo - Andrew Norcross</li> </ul>	12:30pm-1:45pm	Freight & Salvage	\$25
<b>Workshop:</b> Earl White's "Black Americans in Old Time Music: Then and Now"	12:30pm-1:30pm	Freight & Salvage	FREE
<b>Concert:</b> <ul style="list-style-type: none"> <li>Meredith Axelrod &amp; Craig Ventresco</li> <li>Clinton Davis</li> <li>Cookie Segelstein &amp; Joshua Horowitz (Veretski Pass Duet)</li> </ul>	1:00pm-4:00pm	Berkeley Hort	FREE

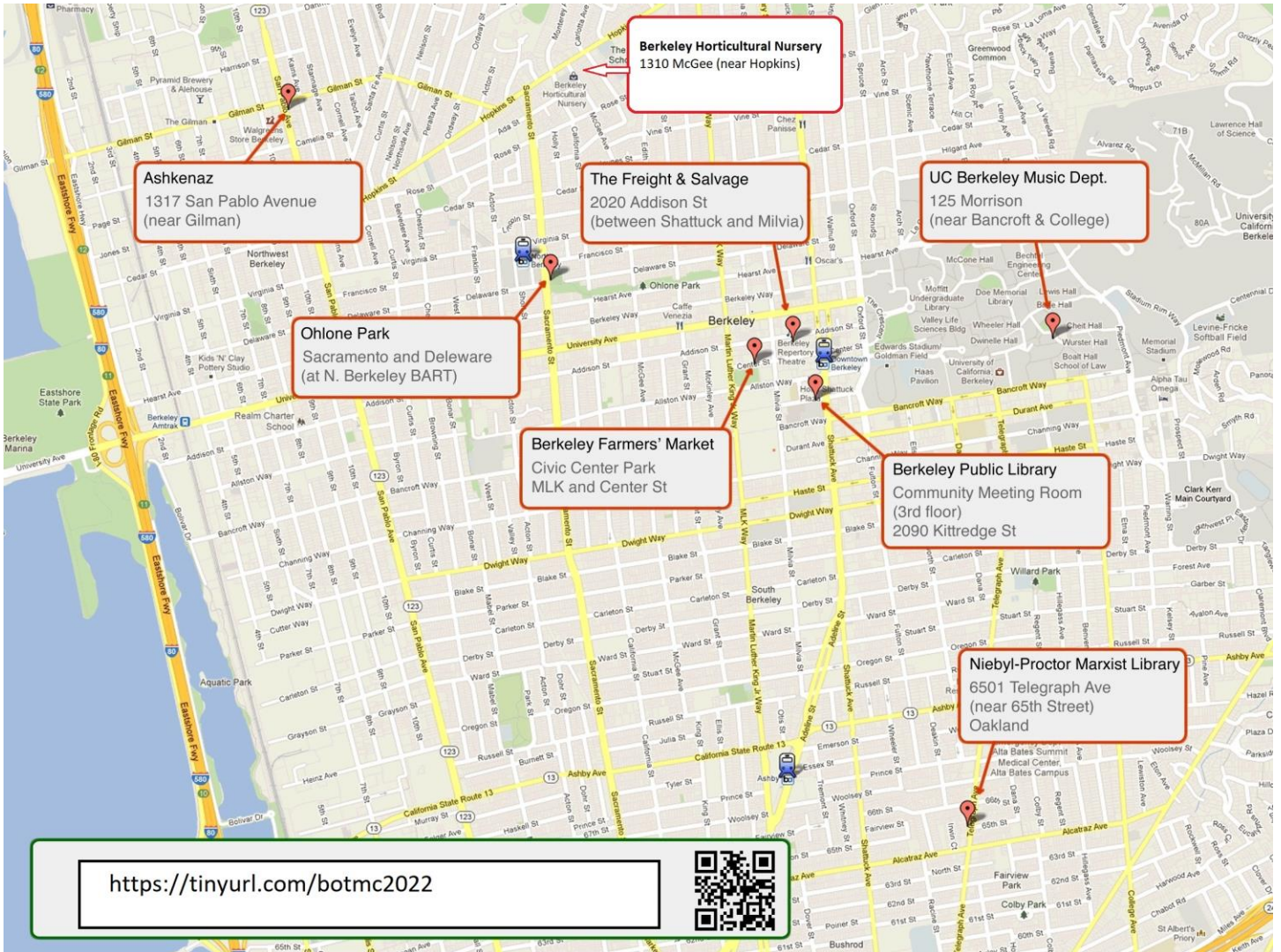
**Freight & Salvage** 2020 Addison St (between Shattuck and Milvia)  
**Ashkenaz** 1317 San Pablo Avenue (near Gilman)  
**Berkeley Farmers' Market** Civic Center Park Center Street near Milvia  
**Berkeley Horticultural Nursery** 1310 McGee Ave, Berkeley (near Hopkins)

*We greatly appreciate the generous support of Ed Littlefield, Jr.; Alliance for California Traditional Arts (ACTA), in partnership with the Walter & Elise Haas Fund, the William & Flora Hewlett Foundation, and the Surdna Foundation; the Berkeley Civic Arts Commission; the Alameda County Art Commission; and the Bill Graham Memorial Foundation. Thanks also to our nonprofit*

sponsors: Freight & Salvage, KPFA-FM, Ashkenaz Music & Dance Community Center, and the California Bluegrass Association.



<http://www.berkeleyoldtimemusic.org>



## RESTAURANT SUGGESTIONS:

**Downtown:** just a few of the many restaurants downtown (near the Freight and Civic Center Park)

Comal ( <i>Open late</i> )	Mexican (upscale)	2020 Shattuck Ave	<a href="http://www.comalberkeley.com">http://www.comalberkeley.com</a>
Comal Next Door	Mexican (informal, to go)	2024 Shattuck Ave	<a href="https://comalnextdoor.com/">https://comalnextdoor.com/</a>
Revival Bar & Kitchen	Upscale; pricey Full bar	2102 Shattuck Ave (Shattuck & Addison)	<a href="http://revivalbarandkitchen.com">http://revivalbarandkitchen.com</a>
Original Pollo	American; cheap	100 Berkeley Square	<a href="http://orderoriginalpollo.com/">http://orderoriginalpollo.com/</a>
Sliver Pizzeria ( <i>til 10:30</i> )	Pizza, salad	2174 Shattuck Ave	<a href="https://www.sliverpizzeria.com/">https://www.sliverpizzeria.com/</a>
Cancun	Burritos	2134 Allston Way	<a href="https://cancunberkeley.com/">https://cancunberkeley.com/</a>
Jupiter ( <i>Open late</i> )	Beer garden; pizza, sandwiches, salads.	2181 Shattuck Ave	<a href="http://www.jupiterbeer.com">http://www.jupiterbeer.com</a>
Triple Rock ( <i>Open late</i> )	Brewpub	1920 Shattuck Ave	<a href="http://www.triplerock.com/">http://www.triplerock.com/</a>
Turkish Kitchen	Turkish	1986 Shattuck Ave	<a href="http://turkishkitchenberkeley.com/">http://turkishkitchenberkeley.com/</a>
Rose Pizzeria	Pizza; outdoor patio	1960 University Ave	<a href="https://www.rosepizzeria.com/">https://www.rosepizzeria.com/</a>
The Butcher's Son	Vegan; outdoor patio	1954 University Ave	<a href="http://www.thebutchersveganson.com/">http://www.thebutchersveganson.com/</a>
Daryoush	Persian	2144 Center	<a href="https://www.daryoush.com/">https://www.daryoush.com/</a>
Eureka ( <i>Open late</i> )	Upscale burgers	2068 Center St	<a href="http://www.eurekarestaurantgroup.com">http://www.eurekarestaurantgroup.com</a>

### Near Ashkenaz:

Picante	Mexican. Can be busy during mealtimes.	1328 6th St. (6 <sup>th</sup> & Gilman)	<a href="http://www.picanteberkeley.com">http://www.picanteberkeley.com</a>
Chipotle	Burritos (chain)	1050 Gilman St	<a href="http://www.chipotle.com">http://www.chipotle.com</a> (across the street from Ashkenaz)
Whole Foods	Market	1025 Gilman St	<a href="http://www.wholefoodsmarket.com/stores/gilman">http://www.wholefoodsmarket.com/stores/gilman</a>
Lulu	Middle Eastern	1019 Camelia St	<a href="https://www.luluberkeley.com/">https://www.luluberkeley.com/</a>
Funky Elephant	Thai	1313 9 <sup>th</sup> St	<a href="https://www.funkyelephantthai.com/">https://www.funkyelephantthai.com/</a>
Sumo	Japanese	977 San Pablo Ave Albany (at Marin)	<a href="https://sumojapanesealbany.com/">https://sumojapanesealbany.com/</a>
Hot Shop	Burritos/Afghan cash only	909 San Pablo Ave,	<a href="https://www.yelp.com/biz/the-hot-shop-albany">https://www.yelp.com/biz/the-hot-shop-albany</a>
Rendez-Vous Café Bistro	French (casual)	1111 Solano Albany	<a href="https://www.rendezvouscafebistro.com/">https://www.rendezvouscafebistro.com/</a>
Sistory Thai Kitchen	Thai	1233 San Pablo Ave	<a href="https://www.sistorythaikitchen.com/">https://www.sistorythaikitchen.com/</a>
Italy on Gilman	Italian	1300 10th St	<a href="https://www.italyongilman.com/">https://www.italyongilman.com/</a>
Westbrae Biergarten	Beer garden; Brazilian	1280 Gilman St	<a href="http://www.westbraebiergarten.com/">http://www.westbraebiergarten.com/</a>
Thai Corner	Thai	1277 Gilman St	<a href="https://www.thaicornergilman.com/">https://www.thaicornergilman.com/</a>
Kiku Sushi	Japanese	1316 Gilman St	<a href="https://www.facebook.com/kikusushiberkeley">https://www.facebook.com/kikusushiberkeley</a>
Bua Thai Kitchen	Thai	1045 San Pablo Ave Albany	<a href="https://www.buathaikitchens.com/">https://www.buathaikitchens.com/</a>

### Near Berkeley Hort:

Espresso Roma Cafe	pastries, sandwiches, salads	1549 Hopkins	
Asaka Sushi	Japanese	1580 Hopkins	<a href="https://www.asakaberkeley.com/">https://www.asakaberkeley.com/</a>
GIOA Pizzeria	Pizza (takeout only)	1586 Hopkins	<a href="https://www.gioiapizzeria.com">https://www.gioiapizzeria.com</a>

## PARKING HINTS:

For all locations: DO NOT leave anything valuable in your car!!!

For downtown venues (Freight, Civic Center Park): Metered street parking until 6pm (enforced right up to 6pm); free evenings and Sunday. Paid parking available in Center Street Garage (next to Freight; easiest to enter from Center St), & Allston Way Garage (enter from Center). You can also find free on-street parking (2 hour limit Monday-Friday until 6pm) in residential areas below Martin Luther King and north of University. Additional parking and transportation advice at <https://www.thefreight.org/visit/> , <https://www.berkeleyrep.org/tickets/plan-your-visit/>, <https://www.downtownberkeley.com/visit/>

At Ashkenaz: free parking across the street in the REI lot